

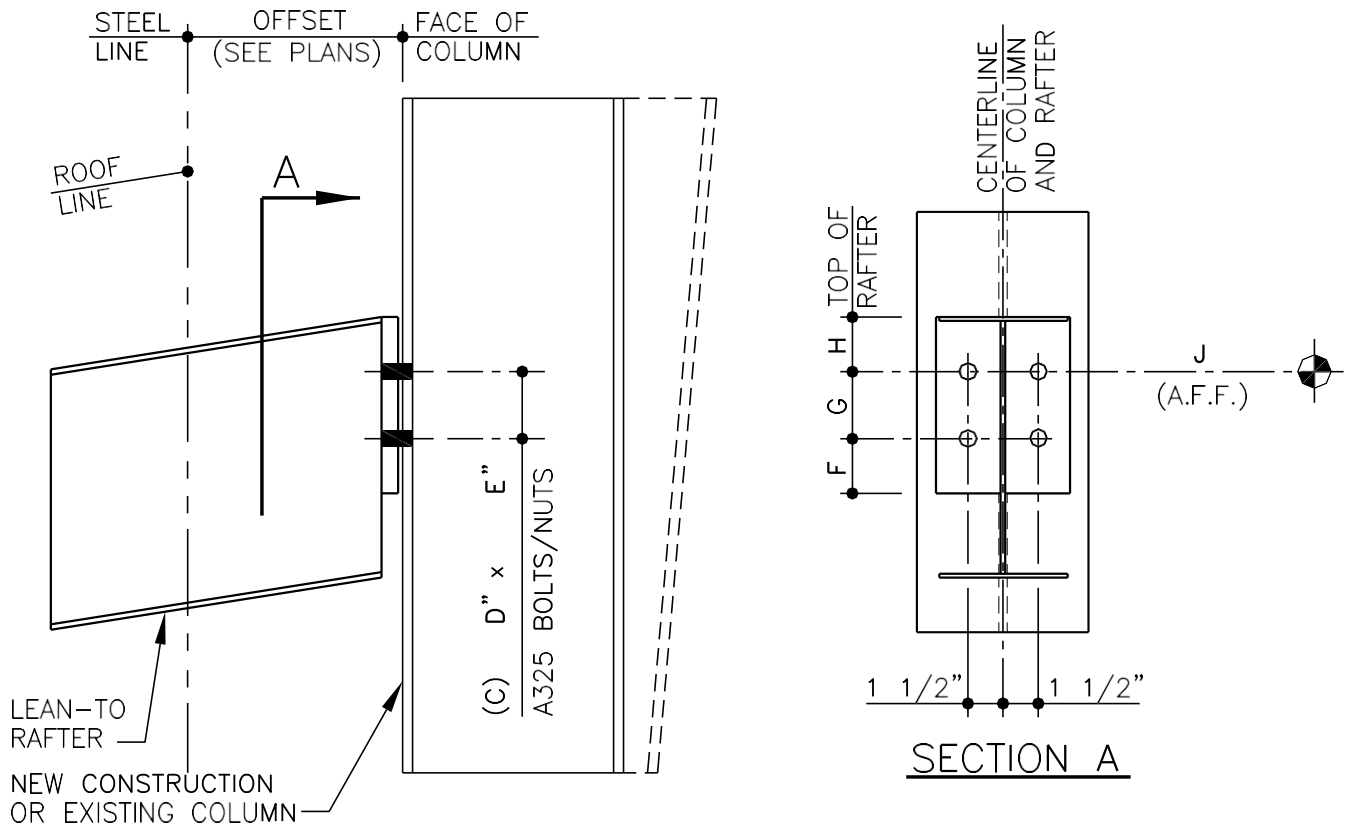
TABLE OF CONTENTS

BELOW EAVE DETAILS 2
 AU0005 – (Below Eave) 2
LOW EAVE DETAILS 3
 AU0055 – At Eave 3
HIGH EAVE DETAILS 4
 AU0110 – Flush (At Eave) 4
 AU0120 – Inset (At Eave) 5
 AU0130 – 8” Bypass (At Eave) 6
 AU0140 – Bypass (At Eave) 7
 AU0150 – 12” Bypass (At Eave) 8
WEB CONNECTION DETAILS 9
 AU0160 – Web Connection 9

NOTE: Section **“4.8-Future Expansion Details”** has similar details that could also be used in a Lean-To type connection. Those details have “Spacers” to make the Rafter to Column Connections at the Steel Line.

BELOW EAVE DETAILS

AU0005 – (BELOW EAVE)



THE FULL HEIGHT COLUMN MAY BE STRAIGHT OR TAPERED. THIS DETAIL IS INTENDED TO SHOW THE CONNECTION OF THE LEAN-TO RAFTER ONLY.

AT AN EXISTING COLUMN CONDITION, FIELD DRILL THE CONNECTION HOLES 1/16" LARGER THAN THE BOLT DIAMETER

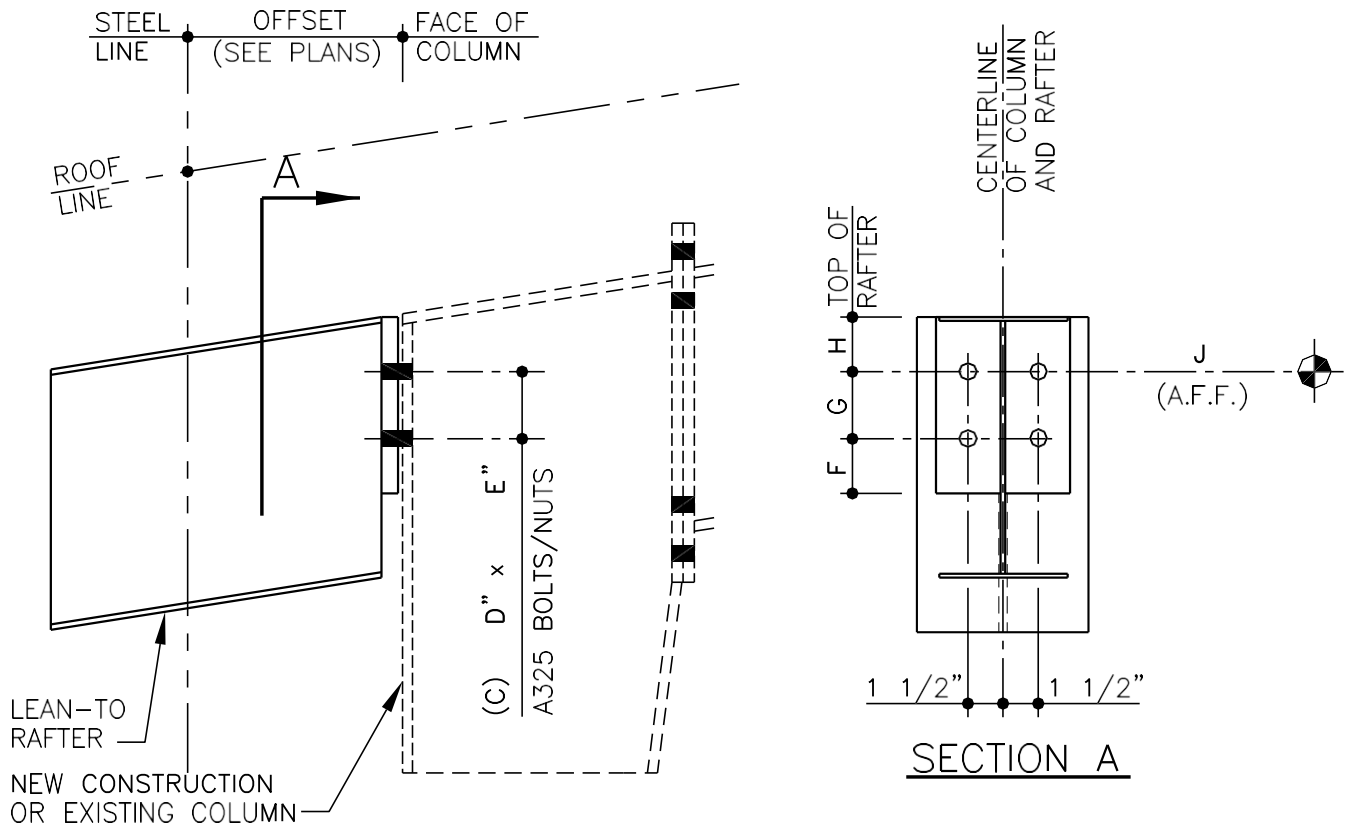
LEAN-TO RAFTER TO COLUMN

BELOW EAVE

AU0005

LOW EAVE DETAILS

AU0055 – AT EAVE



THE FULL HEIGHT COLUMN MAY BE STRAIGHT OR TAPERED. THIS DETAIL IS INTENDED TO SHOW THE CONNECTION OF THE LEAN-TO RAFTER ONLY.

AT AN EXISTING COLUMN CONDITION, FIELD DRILL THE CONNECTION HOLES 1/16" LARGER THAN THE BOLT DIAMETER

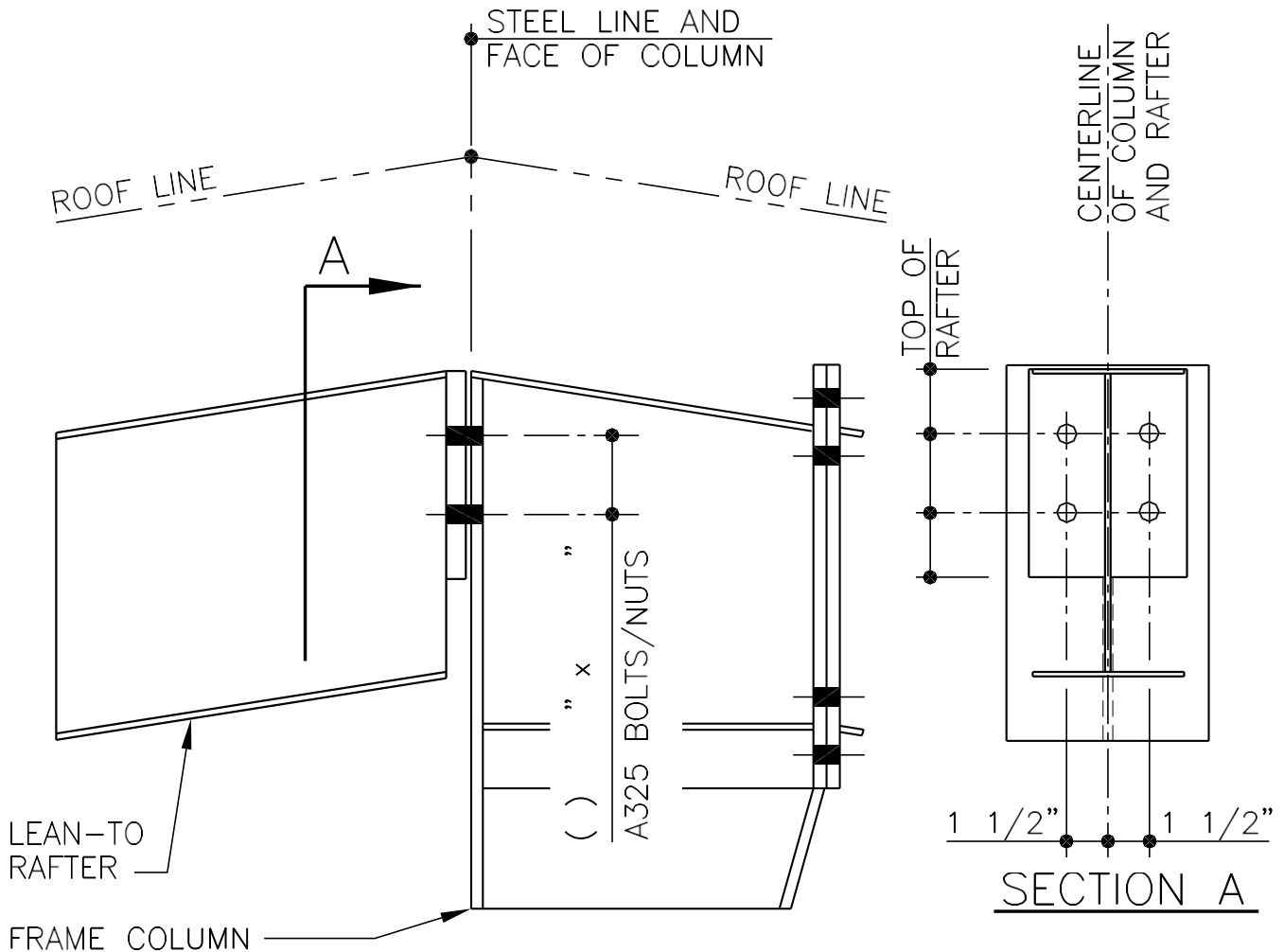
LEAN-TO RAFTER TO COLUMN

AT EAVE

AU0055

HIGH EAVE DETAILS

AU0110 – FLUSH (AT EAVE)



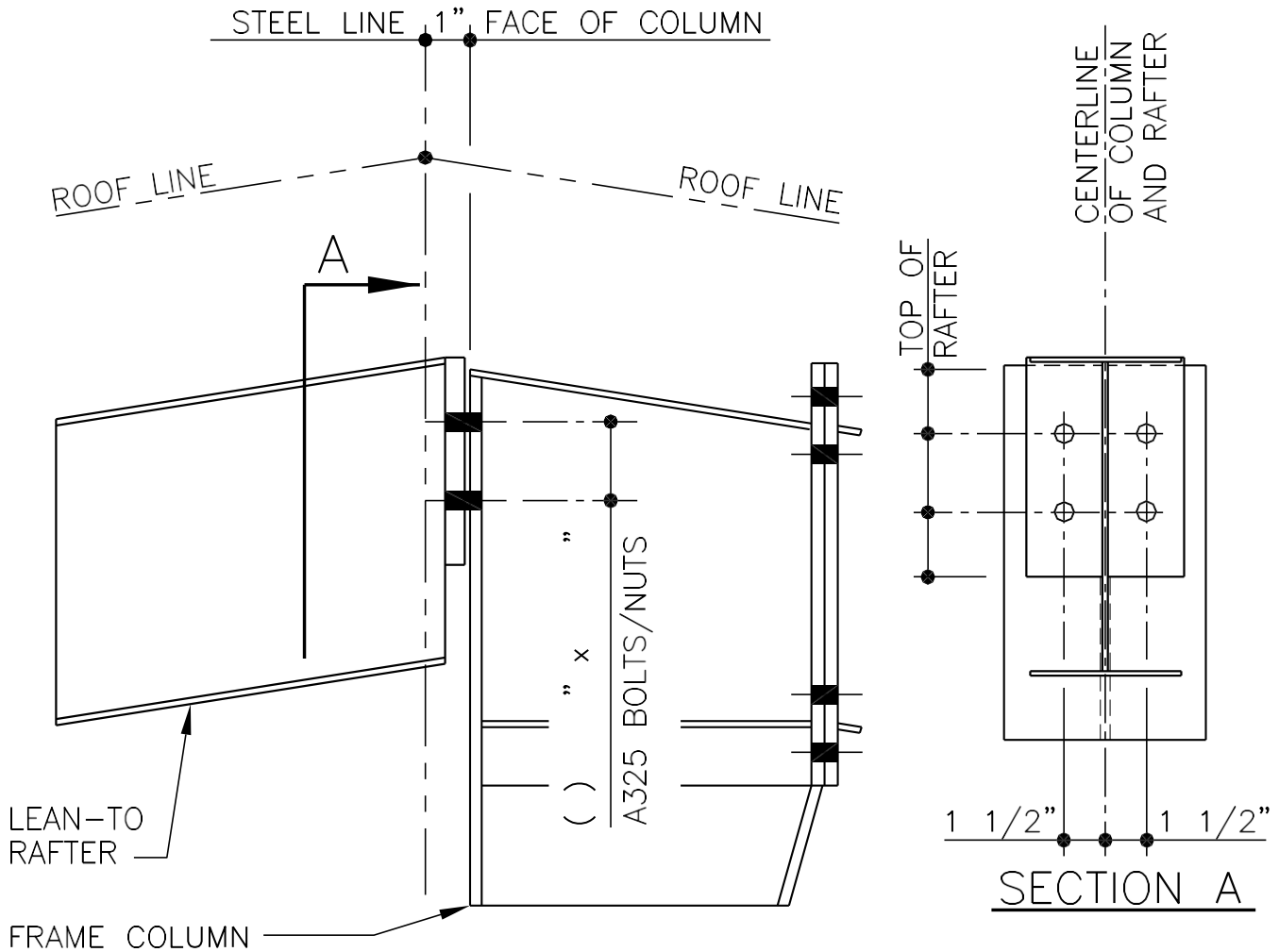
THE FULL HEIGHT COLUMN MAY BE STRAIGHT OR TAPERED. THIS DETAIL IS INTENDED TO SHOW THE CONNECTION OF THE LEAN-TO RAFTER ONLY.

LEAN-TO RAFTER TO COLUMN

(FLUSH CONDITON AT EAVE)
RAFTER TO FLANGE OF FULL HEIGHT COLUMN WITHOUT SPACER

AU0110

AU0120 – INSET (AT EAVE)



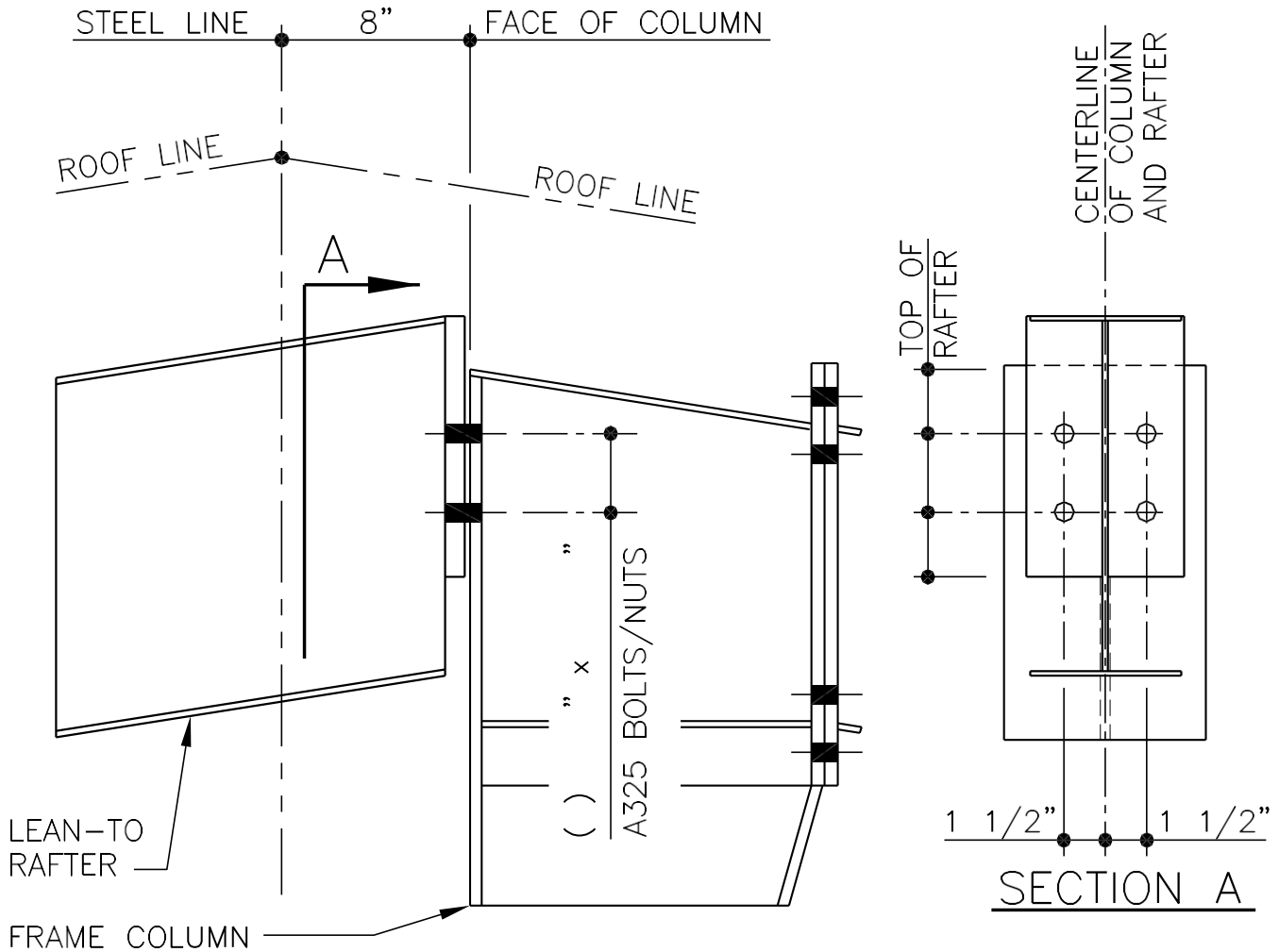
THE FULL HEIGHT COLUMN MAY BE STRAIGHT OR TAPERED. THIS DETAIL IS INTENDED TO SHOW THE CONNECTION OF THE LEAN-TO RAFTER ONLY.

LEAN-TO RAFTER TO COLUMN

(INSET CONDITON AT EAVE)
RAFTER TO FLANGE OF FULL HEIGHT COLUMN WITHOUT SPACFR

AU0120

AU0130 – 8" BYPASS (AT EAVE)



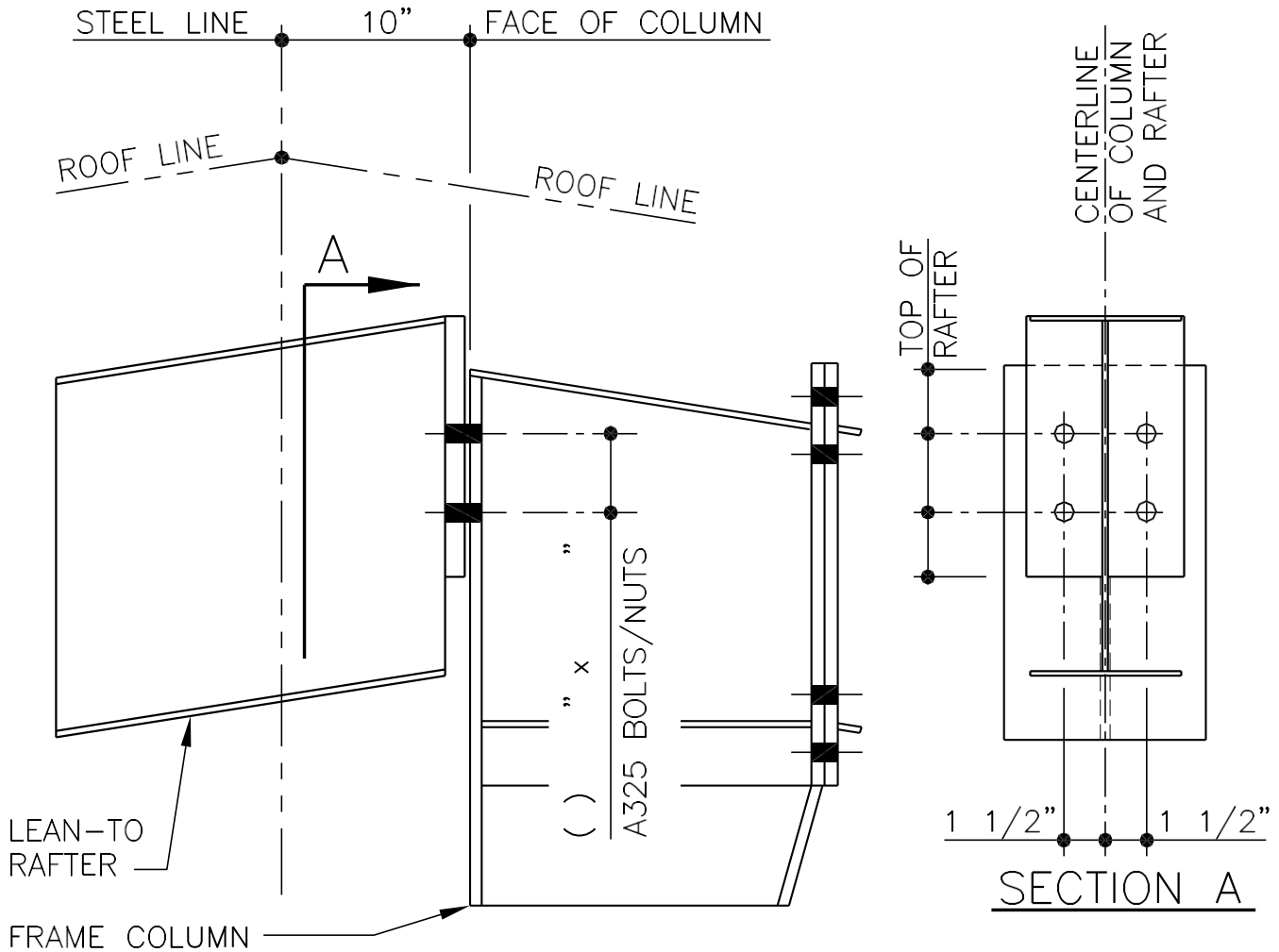
THE FULL HEIGHT COLUMN MAY BE STRAIGHT OR TAPERED. THIS DETAIL IS INTENDED TO SHOW THE CONNECTION OF THE LEAN-TO RAFTER ONLY.

LEAN-TO RAFTER TO COLUMN

(8" BYPASS CONDITON AT EAVE)
RAFTER TO FLANGE OF FULL HEIGHT COLUMN WITHOUT SPACFR

AU0130

AU0140 – BYPASS (AT EAVE)



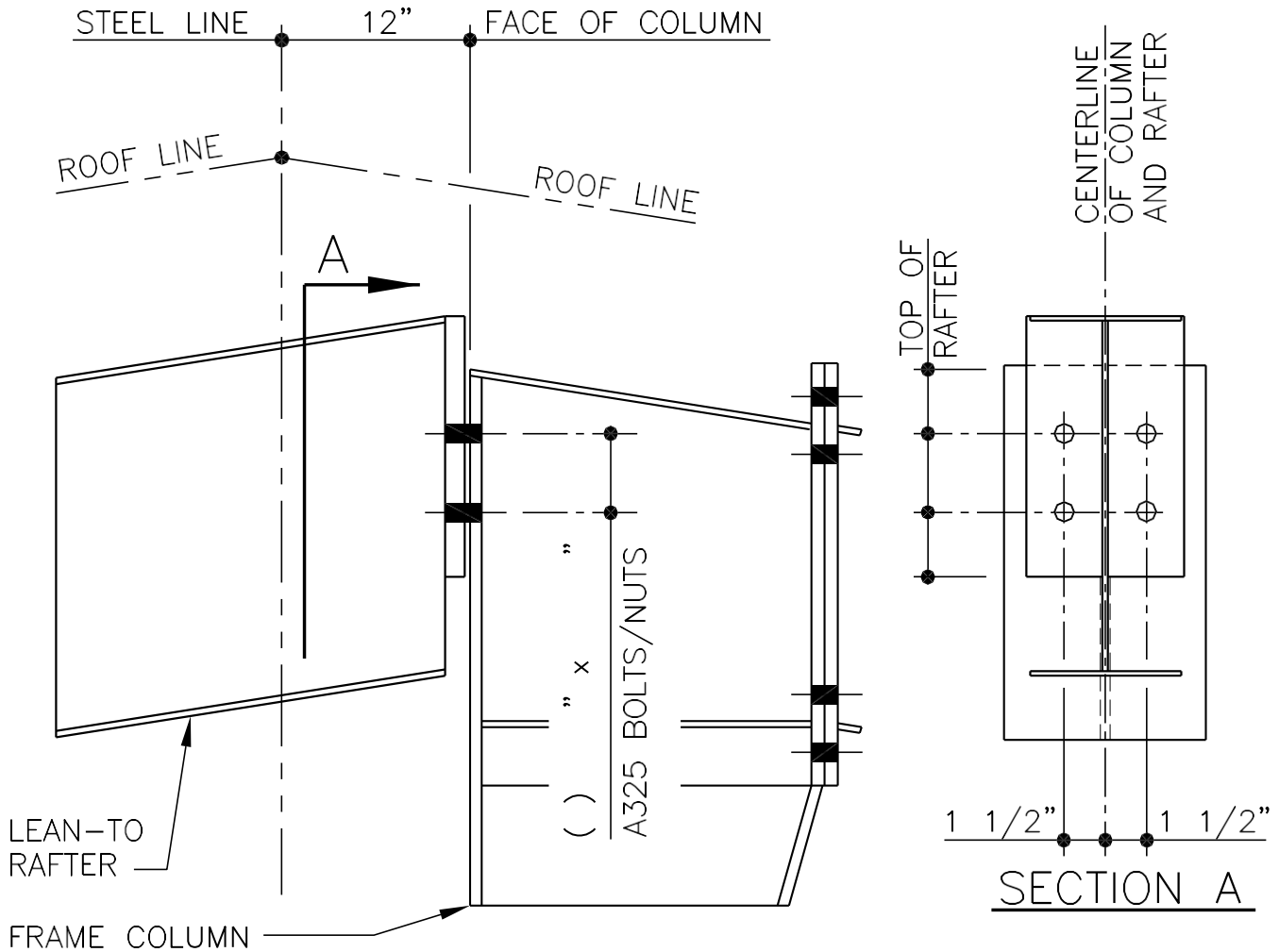
THE FULL HEIGHT COLUMN MAY BE STRAIGHT OR TAPERED. THIS DETAIL IS INTENDED TO SHOW THE CONNECTION OF THE LEAN-TO RAFTER ONLY.

LEAN-TO RAFTER TO COLUMN

(10" BYPASS CONDITON AT EAVE)
RAFTER TO FLANGE OF FULL HEIGHT COLUMN WITHOUT SPACER

AU0140

AU0150 – 12" BYPASS (AT EAVE)



THE FULL HEIGHT COLUMN MAY BE STRAIGHT OR TAPERED. THIS DETAIL IS INTENDED TO SHOW THE CONNECTION OF THE LEAN-TO RAFTER ONLY.

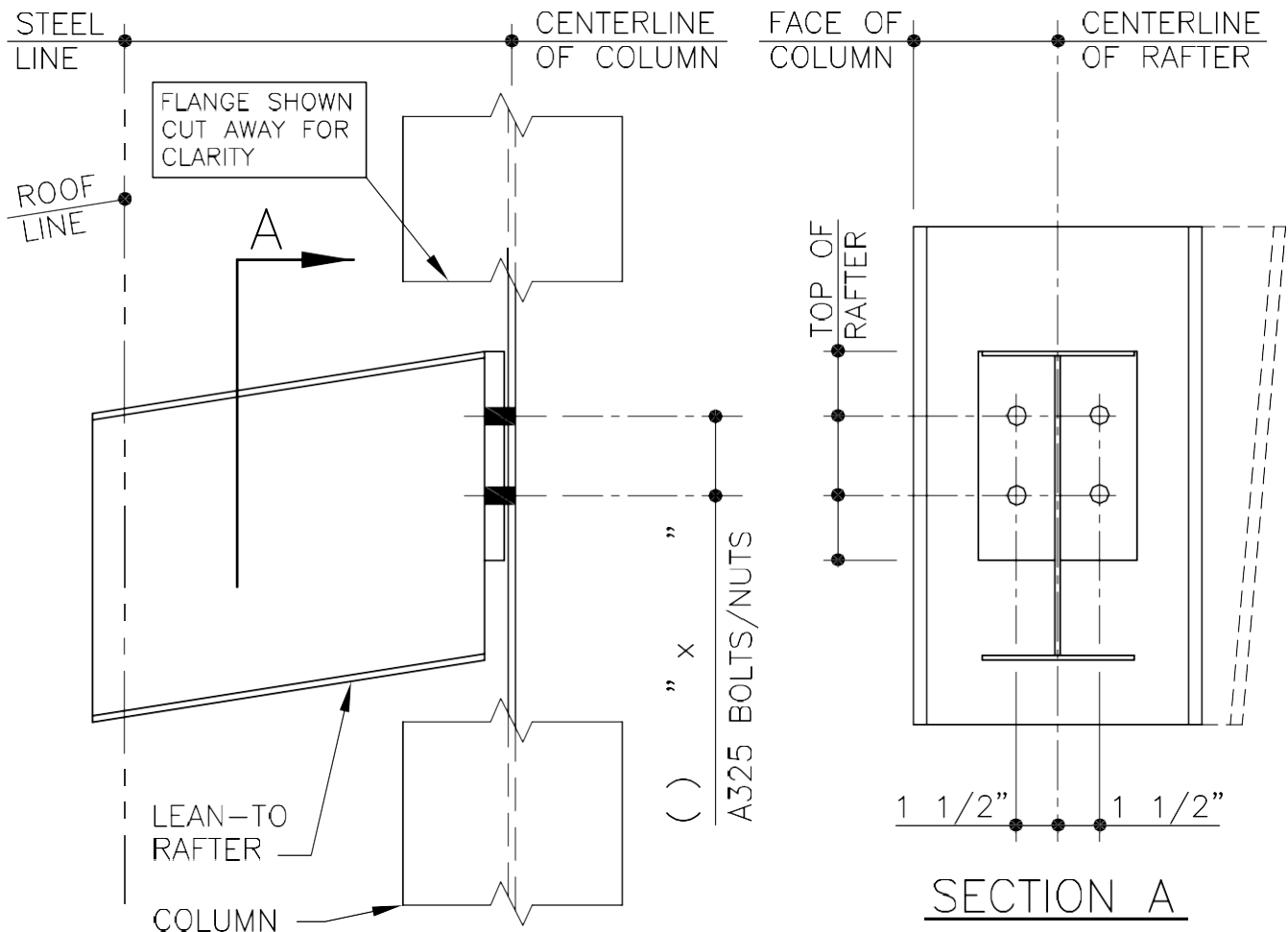
LEAN-TO RAFTER TO COLUMN

(12" BYPASS CONDITON AT EAVE)
RAFTER TO FLANGE OF FULL HEIGHT COLUMN WITHOUT SPACFR

AU0150

WEB CONNECTION DETAILS

AU0160 – WEB CONNECTION



THE FULL HEIGHT COLUMN MAY BE STRAIGHT OR TAPERED. THIS DETAIL IS INTENDED TO SHOW THE CONNECTION OF THE LEAN-TO RAFTER ONLY.

LEAN-TO RAFTER TO COLUMN

RAFTER TO WEB OF FULL HEIGHT COLUMN
(WITHOUT SPACER)

AU0160